

### Magaliesberg Straight Sliding Glass Rail 80 Side Fix

- Application**
- Highly versatile commercial sliding door system
  - This system compliments all aspects of the modern design arena
  - Nylon wheels on aluminium track provide a smooth, silent ride
  - To accommodate different building designs, doors can slide to one or both sides
  - The magaliesberg system can be used both internally and externally & has the option of a clip on aluminium fascia

**Specification**

For Individual Doors:  
 Max door height - Wind Load Dependent  
 Max door weight 200kg  
 Glass thickness(mm) 8-10  
 Rail width (mm) 36

**Gear Specification**

Track: 600  
 Material aluminium extrusion  
 Removable joint 600/RJ

**Brackets:**  
 For single track (face fixing) 1B  
 For single track (soffit fixing) 4/550  
 (track can be drilled for soffit fixing)  
 Jointing bracket 1BX  
 Fix at 900 centres (maximum)

**Fascia:**  
 Face fixed track 600/F1  
 Soffit fixed track 600/F3

**Hangers 2 per door:**  
 Glass Rail 56B  
 56B/450

**Glass Rail Insert** AG06

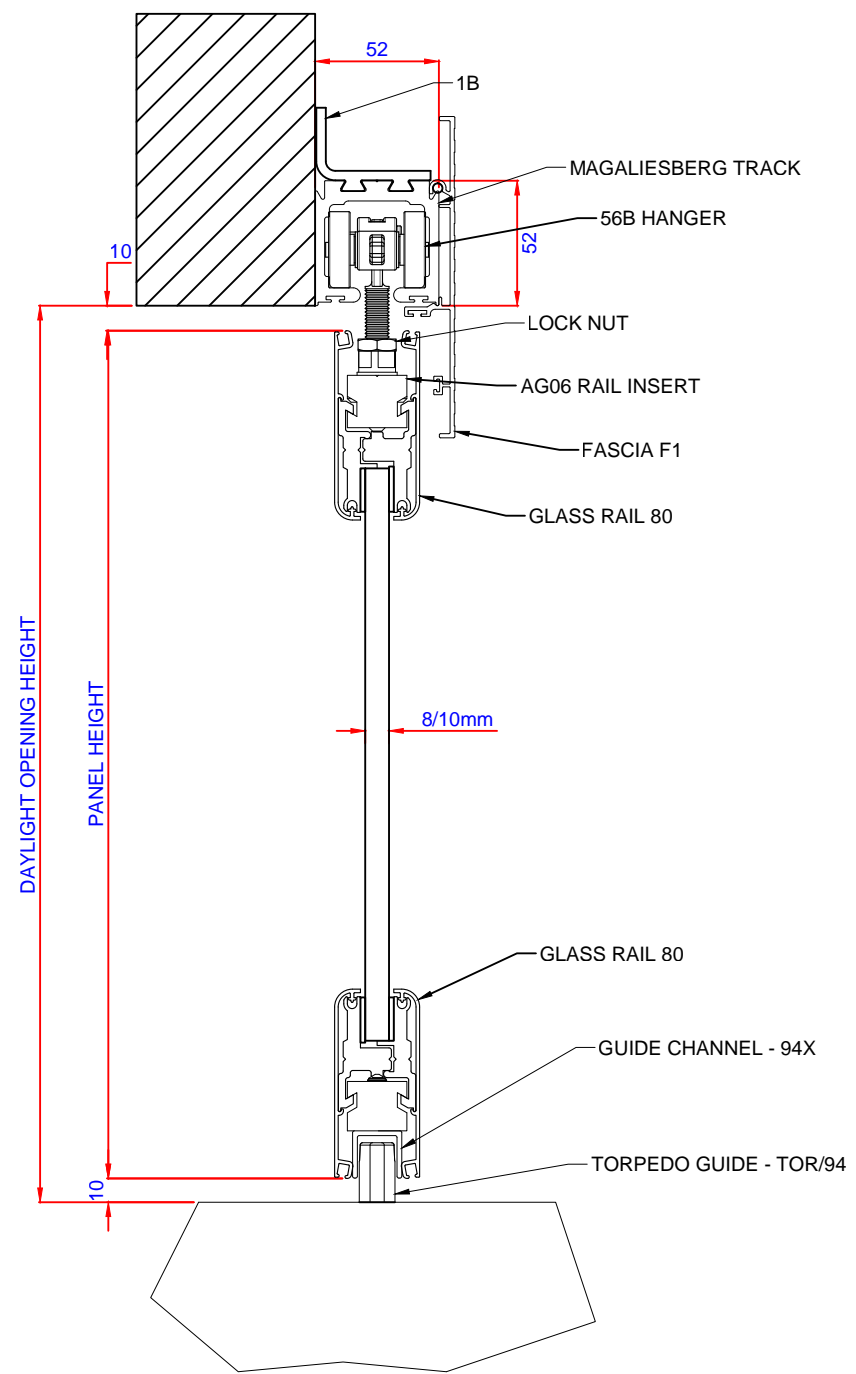
**Guides:**  
 Glass Rail TOR/94  
 All steel parts are zinc plated

**Channel:**  
 94B brass extrusion  
 94X aluminium extrusion

[Cad Drawing available here.](#)

Revision: 06-07-2017

**SA Sliding Door Sales**  
 9 Hereford Dr  
 Longmeadow Business Estate West, Modderfontein, Johannesburg South Africa  
 Tel:+27 11 663 6600  
 Fax:+27 86 625 1435  
 sales1@hdsdg.co.za  
 www.saskindoorssales.co.za



|                                  |    |
|----------------------------------|----|
| Glass Height = Panel Height - 2X |    |
| Glass Thickness                  | X  |
| 8                                | 58 |
| 10                               | 58 |